

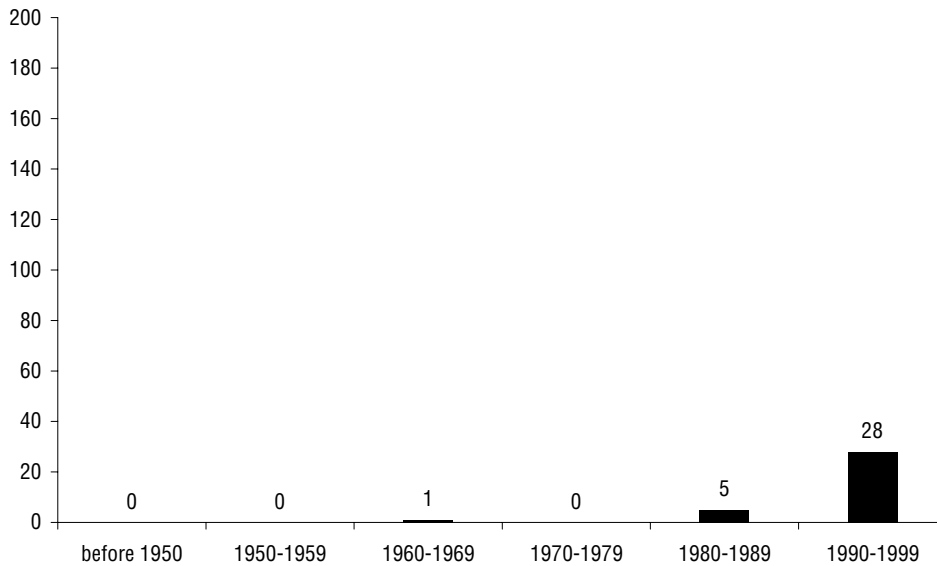
10 complete Shedeý cycle

"I have got the matrix, but it seems impossible to finish it..."

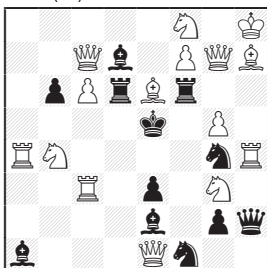
(Ludovít Lačný, showing me his idea with promoted force, about autumn 1992)

| | | | |
|--|---|---|---|
| | | a | b |
| | A | B | C |
| | B | C | A |
| | C | A | B |

| | Pioneer problem | Pioneer orthodox twomover without twins |
|--------------------|---------------------------------|---|
| 3-fold | 1624 L. LAČNÝ 1969 | 1620 L. LAČNÝ, P. GVOZDJÁK 1993 |
| 4-fold | 1648 N. SHANKAR RAM 1987 | x |
| 5-fold | 1651 L. LAČNÝ 1999 | x |
| 6-fold | x | x |
| 7-fold and more | 1652 N. SHANKAR RAM 1995 | x |



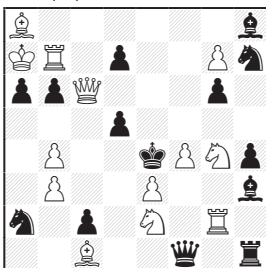
Ludovít LAČNÝ
Peter GVOZDJÁK
 1st Prize
 Formánek-60 JT, C 6.6.1993
1620 (C+)



#2 (15+12)
 Promoted force

| | | | | |
|-------|-------------|-------------|-------------|--------|
| | | Kd4 | Kf4 | |
| Qxe2? | Sd3 | Qxf6 | Qxd6 | -Bxe6! |
| Bxg4? | Qxf6 | Qxd6 | Sd3 | -Bf5! |
| Se4! | Qxd6 | Sd3 | Qxf6 | |

Peter GVOZDJÁK
 dedicated to Lucia, Barbora, Dorota
 original
1622 (C+)

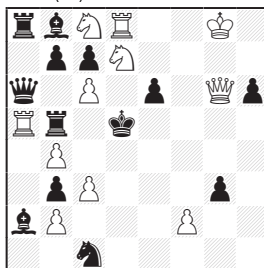


#2 (13+14)
 3 solutions

| | | | | |
|-------|-------------|-------------|-------------|------|
| | | Kd3 | Kf5 | |
| g8B? | Qxd5 | Qxg6 | Qxc2 | -7*! |
| Sg1? | Qxg6 | Qxc2 | Qxd5 | -7*! |
| Sh2? | Qxc2 | Qxd5 | Qxg6 | -9*! |
| Qxd5! | + | | | |
| Qxg6! | + | | | |
| Qxc2! | + | | | |

*number of refutations

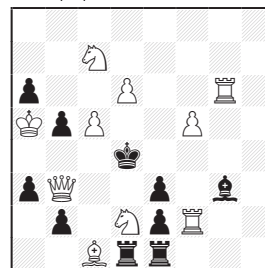
Ludovít LAČNÝ
 4th Prize
 TT Pravda, C 1.11.1969
1624 (C+)



#2 (11+13)
 B: bSb5 Pb3-d3 C: bSb5 Pb7-b6

| | | | | |
|---|------|-------------|-------------|-------------|
| | | Kc4 | Kxc6 | |
| A | f4! | Se5 | Qe4 | Qxe6 |
| B | f3! | Qe4 | Qxe6 | Se5 |
| C | Kf7! | Qxe6 | Se5 | Qe4 |

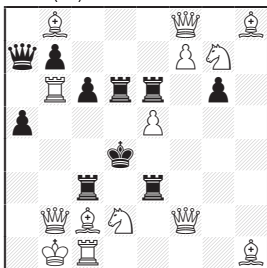
Ján VALUŠKA
 5th Place
 Šala-Zvolen, C 31.7.1988
1626 (C+)



#2 (10+10)
 B: reflect round "d"

| | | | | |
|---|-------|-------------|------------|-------------|
| | | Kxc5 | Ke5 | |
| A | Rxg3? | Qxe3 | Qd5 | Qc3 |
| A | Sb1! | Qd5 | Qc3 | Qxe3 |
| B | Rxa3? | Qxc3 | Qe3 | Qd5 |
| B | Sf1! | Qd5 | Qxc3 | Qe3 |

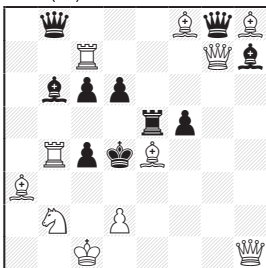
Peter GVOZDJÁK
 Special Prize
 Stošić MT, C 1.10.1995
1621 (C+)



#2 (14+10)
 Promoted force

| | | | | |
|------|-------------|-------------|-------------|---------|
| | | Kc5 | Kxe5 | |
| Re1? | Qxe3 | Sxe6 | Qxc3 | -R6xe5! |
| Qd8? | Sxe6 | Qxc3 | Qxe3 | -Rf6! |
| Bb3! | Qxc3 | Qxe3 | Sxe6 | |

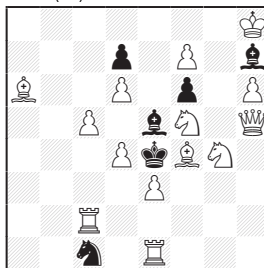
Emil KLEMANIČ
 4th Prize
 Formánek-60 JT, C 6.6.1993
1623 (C+)



#2 (11+10)
 B: Bf8-d8 C: Be4-d3
 Promoted force

| | | | | |
|---|-------|-------------|-------------|-------------|
| | | d5 | Kc5 | |
| A | Bxc6! | Qhg1 | Qxe5 | Rxc4 |
| B | Rd7! | Qxe5 | Rxc4 | Qhg1 |
| C | Rf7! | Rxc4 | Qhg1 | Qxe5 |

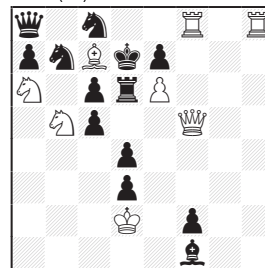
Vladimir MOIKIN
 Special Prize
 Sovetsky Sakhalin, 1.12.1989
1625 (C+)



#2 (14+6)
 B: Rc2-b8 C: Rc2-g7 Sf5-d8

| | | | | |
|---|------|-------------|-------------|-------------|
| | | Kf3 | Kd5 | |
| A | Sg7! | Qh1 | Sxf6 | Bb7 |
| B | Re8! | Sxf6 | Bb7 | Qh1 |
| C | Rd1! | Bb7 | Qh1 | Sxf6 |

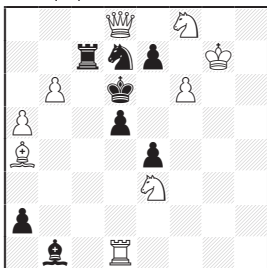
Jacques ROTENBERG
Christian POISSON
Michel CAILLAUD
 1st Prize
 Gvozdzák-30 JT, C 16.11.1995
1627 (C+)



#2 (8+13)
 Anti-Circe type Cheylan

| | | | | |
|--------|-------------|-------------|-------------|-------|
| | | Sd8 | Qb8 | |
| Bd8? | Sb8 | [bSb8] | Kxd3 | -Sb6! |
| Bb8? | Rd8 | Kxd3 | Sb8 | -Bg2! |
| Qxf2! | Kxd3 | [wKe1] | Rd8 | |
| [wOd1] | [wKe1] | Sb8 | | |

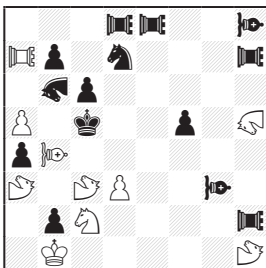
Miroslav BRADA
Variant Chess, 1998
(new version)
1628 (C?)



#2 (9+8)
MAFF
OWU
3 solutions

| | | | |
|------|-------------|-------------|-------------|
| | | Ke5 | Kc5 |
| b7! | Qxc7 | Qxe7 | Rxd5 |
| f7! | Qxe7 | Rxd5 | Qxc7 |
| Sc2! | Rxd5 | Qxc7 | Qxe7 |

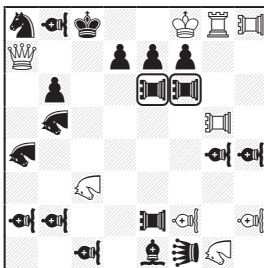
Reto ASCHWANDEN
Phénix, 4.1993
(new version)
1630 (C+)



#2 (10+14)
1+4 Rook-Lions, 1+2 Bishop-Lions
1+1 R0se-Lions, 3+0 R0ses

| | | | | |
|-------|-------------|-------------|-------------|--------|
| | | Sd7~ | Se5! | |
| ROf6? | ROf2 | RLc7 | d4 | -BLe5! |
| BLe7? | RLc7 | d4 | ROf2 | -RLe5! |
| BLd6! | d4 | ROf2 | RLc7 | |

Reto ASCHWANDEN
Peter GVOZDJÁK
1st-2nd Prize
Lehen-70 JT, C 31.12.1995
1632 (C?)



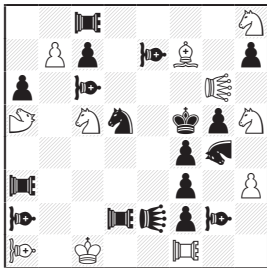
#2 (9+19)
0+1 LEo, 2+1 Paos
2+6 VAos, 2+2 Naos
0+2 siamese PAos

| | | | | |
|-------|-------------|-------------|-------------|--------|
| | | PAe6~/PAf6~ | PAf6!/PAg6! | |
| NAd5? | Kxf7 | Kg7 | Kxe7 | -d6! |
| PAc5? | Kg7 | Kxe7 | Kxf7 | -LEg2! |
| VAe3? | Kxe7 | Kxf7 | Kg7 | -VAg5! |

2x theme

| | | | | |
|-------|-------------|-------------|-------------|--------|
| | | PAe6~/PAf6~ | PAf6!/PAg6! | |
| PAd5? | Kxf7 | Kxe7 | Kg7 | -VAh6! |
| NAe4? | Kxe7 | Kg7 | Kxf7 | -Bb4! |
| VAc5! | Kg7 | Kxf7 | Kxe7 | |

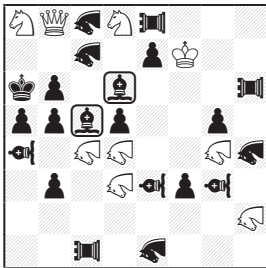
Reto ASCHWANDEN
Phénix, 4.1993
1629 (C+)



#2 (11+18)
1+1 LioNs, 1+3 Rook-Lions
1+4 Bishop-Lions, 0+1 R0se-Lion
1+0 R0se

| | | | | |
|-------|----------------|----------------|----------------|--------|
| | | Sd5~ | Se3! | |
| LNe4? | RLxf3 | bxcb8R0 | Be6 | -Sb6! |
| LNd3? | bxcb8R0 | Be6 | RLxf3 | -RLe3! |
| ROc4! | Be6 | RLxf3 | bxcb8R0 | -LNe4! |

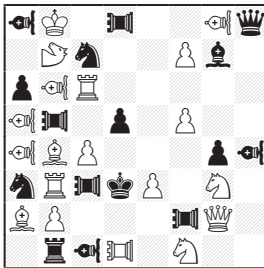
Peter GVOZDJÁK
dedicated to R. Aschwanen
Phénix, 9.1994
(correction 7.-8.1998)
1631 (C?)



#2 (9+21)
0+3 PAos c1 e8 h6
0+3 VAos a4 e3 g3, 5+4 Naos
0+2 siamese Bishops

| | | | | |
|-------|-------------|-------------|-------------|--------|
| | | Bc5~/Bd6~ | Bb4!/Bc5! | |
| NAg6? | Qxb6 | Sxc7 | Qb7 | -NAe6! |
| NAf4? | Sxc7 | Qb7 | Qxb6 | -NAa3! |
| NAf5! | Qb7 | Qxb6 | Sxc7 | |

Emil KLEMANIČ
1st-2nd Prize
Kotěšovec-40 JT, C 29.7.1996
1633 (C+)



#2 (19+16)
1+4 PAos, 4+3 VAos, 1+0 R0se

| | | | | |
|------|-------------|-------------|-------------|-------|
| | | d4 | Kxc4 | |
| Bc5? | Sd2 | Qe4 | Rxc3 | -Bd4! |
| Rd6? | Qe4 | Rxc3 | Sd2 | -Bd4! |
| Rf6! | Rxc3 | Sd2 | Qe4 | |

| | | |
|---|---|---|
| | a | b |
| A | B | C |
| B | C | A |
| C | A | B |

- > 10. complete Shedey cycle **1620-1653**
- >> 3-fold **1620-1647**
- >>> orthodox #2 **1620-1626**
- >>> fairy #2 - conditions **1627-1628**
- >>> fairy #2 - units **1629-1639**

1622: This anti-problem proves there is no need of promoted force! And why is it dedicated to girls of my family? Well, probably any other person would be angry!
1629-1632: b correction